



Innovation

Efficient and Productive



Construction

Fast and Flexible



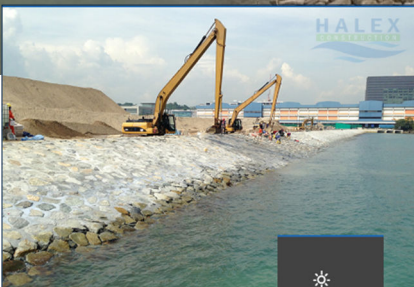
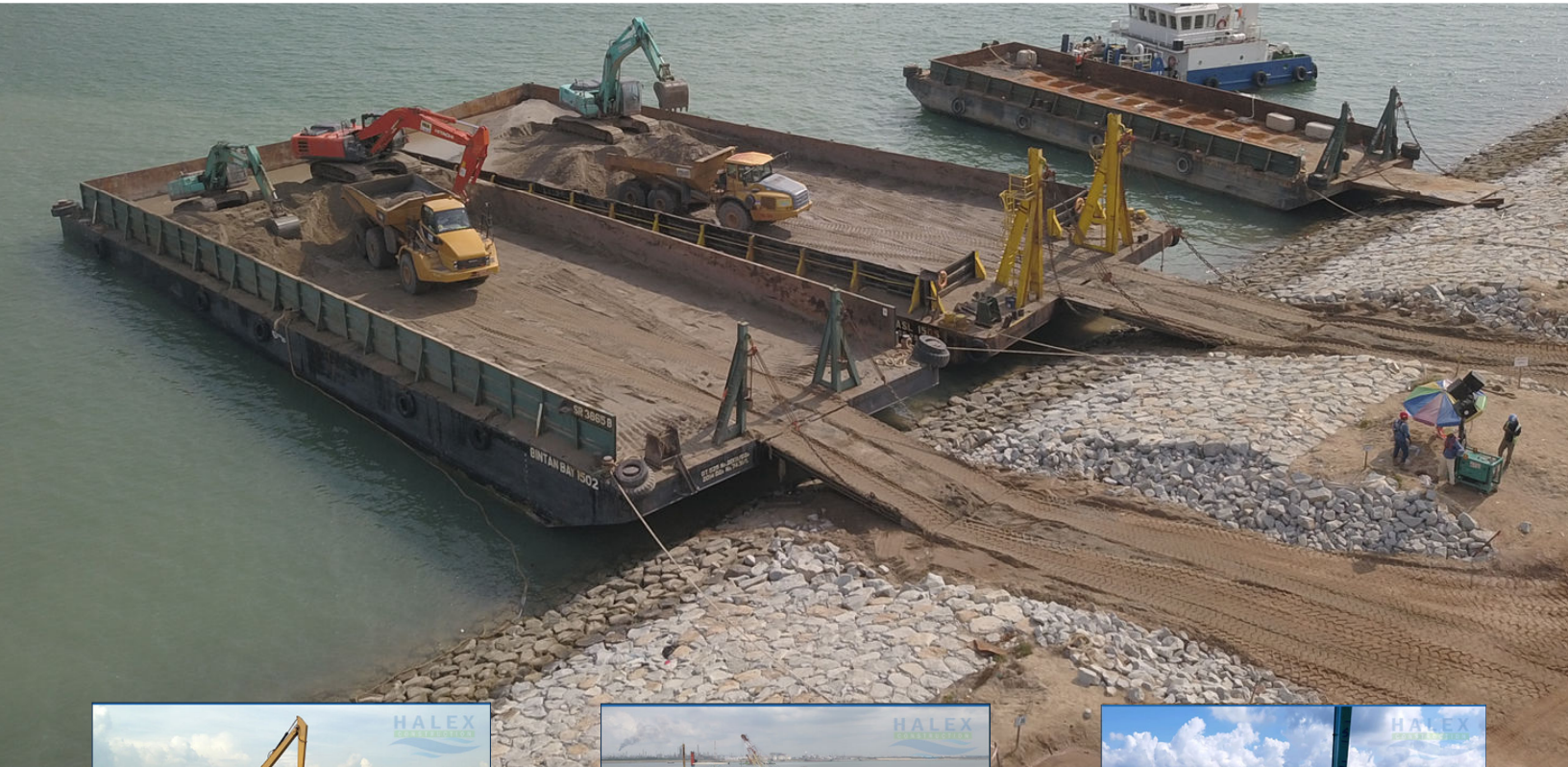
Engineering

Systematic and Precise



Human Resource

Creative and Resourceful



SHORE PROTECTION & RIP RAP STONE WORKS

We provide full suite of services on all forms of shoreline protection including Shore protection, Rip Rap, Dukes and PUB Drain outfall



CASSION ROCK FILTER & SCOUR PROTECTION SYSTEM

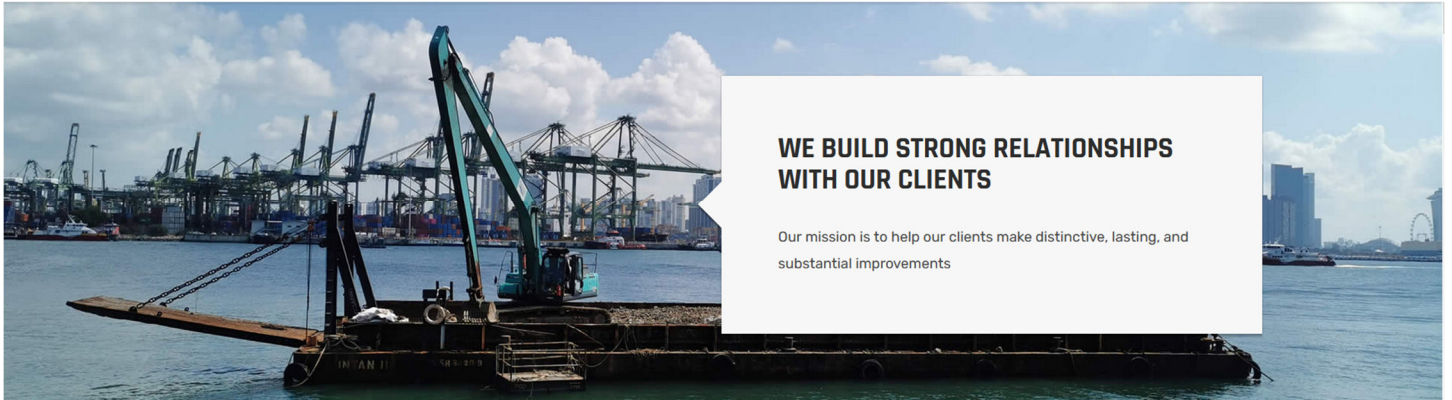
Massive Cassion installation followed by rock works



SAND CAPPING AND SAND PUMPING

Using a combination of machinery and sand pumps, we are able to fill or dredge sand in a cost efficient and highly productive method





WE BUILD STRONG RELATIONSHIPS WITH OUR CLIENTS

Our mission is to help our clients make distinctive, lasting, and substantial improvements



MARINE/LAND RELATED WORKS

Land and Marine interfacing works

Established in 2011, Halex Construction Pte Ltd (Halex) has already proven track records of successfully completing some of the most challenging marine construction projects undertaken. We are committed to maintaining our role as a major contender in Shore Protection and Civil Engineering Works in Singapore. Halex has demonstrated its commitment in providing customers with the highest standard of workmanship, unceasingly upgrading the skills of its staff and deploying the most advanced equipment, technology and work procedures available in the industry. Halex will continue to provide its current and future customers with the most innovative and cost-effective solutions to meet all their civil engineering challenges.

TRUSTED EXPERIENCE WITH MORE THAN 45 YEARS IN MARINE CONSTRUCTION

The Company Director has earned an enviable reputation for his innovative and efficient approach on an extensive range of marine construction projects over his 48 years of experience; including shore and bank protection works for reclaimed land, jetties, harbours, breakwaters, dredging and other marine works.



48

Years of experience



95

Team members



QUALITY CONSTRUCTION IS ESSENTIAL FOR LONG TERM PERFORMANCE

Our industry's professionals are able to deliver better ideas and solutions embedded with a deep understanding of each client's business and industry. The industry focus of our experts allows us to offer comprehensive solutions.

DEDICATED TEAM

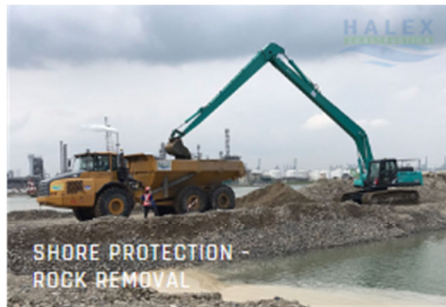
An experienced & dedicated team deployed to your project

ON-TIME DELIVERY

We are committed to meeting your schedule

SAFETY FIRST

Risk mitigation in order to ensure our team is well trained, safety being our number one priority



MISSION

A premier and trustworthy partner in Asia Pacific providing outstanding quality in shore protection and civil engineering works.



VISION

To provide innovative and cutting-edge solutions to customers in a cost-effective and safe environment.



ACCOUNTABILITY & SAFETY

To strive for the best performance and prioritise the safety of our workers.

WE PROVIDE FULL SUITES OF SHORE PROTECTION WORKS FOR YOU



Supply

Material Procurement



Dredging

Fine Trimming Works



Hydro survey

Single/Multibeam



Diving Inspection

QA/QC works



Geofabric

Sewing and Laying



Topo Surveying

Intrim/Joint Surveying



Stone Placing

C Stone to Armour Rock



Pitching Work

Cement Mortar (optional)



To provide innovative and cutting edged solution to customers in a cost effective and safe environment.

CONTACT INFO

- 204 Hougang Street 21
- #03-105 Singapore 530204
- email@halex.com.sg
- +65 62888951

Company Information

HALEX CONSTRUCTION PTE. LTD.

UEN: 201117812K

204 HOUGANG STREET 21 #03-105 Singapore
530204

62888951

62888951

Tendering Limit

Find out more about the tendering limits

[Check](#)

Registered Contractors

Workheads	Description	Grade	Expiry Date
CR01	Minor Construction Works	Single Grade	01/04/2027
CW02	Civil Engineering	C1	01/04/2027

Licensed Builders

Licensing Code	Description	Expiry Date
GB1	General Builder Class 1	14/05/2025



AYER MERBAU PHASE II

A high-quality project we are proud to be involved in. Despite occasional challenges, we overcame it with concerted teamwork and close communication with our client.

[READ MORE](#)



TEKONG POLDER DIKE

The first ever polder dike project undertaken by the Singapore government due to climate change and rising sea levels. Halex is proud to have the opportunity to work on several different scopes of work in this project.

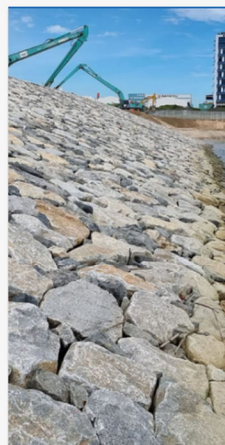
[READ MORE](#)



TUAS FINGER ONE

The proposed reclamation at Tuas Finger One is the first of the four 'fingers' of the new Tuas Mega Port. Finger One is creating approximately 3.5km of wharf structure using concrete caissons. The reclamation area is 165 ha with 3.6 km caisson quay wall. Caissons refer to large concrete structures used for the foundation in underwater work

[READ MORE](#)



TUAS WESTERN COAST (TWC) RECLAMATION

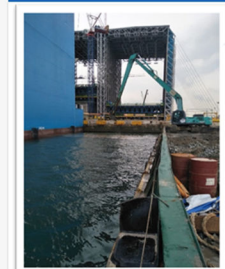
The work contains the construction of shore protection works for perimeter bund. Rock revetment shall start from toe of the seabed to the crest level. Geofabric panels will be placed after sand trimming according to the design. After installation of Geofabric, rocks will be placed according to the specifications and approved drawing.

[READ MORE](#)



CHANGI EAST RECLAMATION

The Proposed Construction of Temporary Drain at Changi East is another project we are proud to be part of. We completed this project ahead of schedule efficiently.



TUAS TERMINAL PHASE 2, TTP2

All container operations in Singapore will be consolidated at Tuas Terminal by the 2040s. One of our key challenges of this project was to trim gravel within 0.1m tolerance level, such that the huge caisson could be moved into the seated floating dock effectively.



C E R T I F I C A T E

The Workplace Safety and Health Council
is pleased to certify that

HALEX CONSTRUCTION PTE. LTD.

has fulfilled the requirements to attain bizSAFE Level 4

This certificate is valid till 10/8/2025



Christopher Koh
General Manager
Workplace Safety and Health Council



SME 500 SINGAPORE

Congratulates

HALEX CONSTRUCTION PTE. LTD.

based on nominations, assessments and business resilience,
being awarded the prestige commercial status of a

SINGAPORE 500 SME COMPANY FOR THE YEAR OF 2021



Authorized Signatory
Singapore SME 500 Award Committee

Authorized Signatory
Association of Trade & Commerce (Singapore)

Date of Issue: 16 JUNE 2021

Certificate Number: 21-42352


The Singapore SME 500 Award is Supported By:





HALEX

CONSTRUCTION



We are committed to providing customers with the highest standard of workmanship, unceasingly upgrading the skills of our staff and deploying the most advanced plant, equipment, technology and work procedures available in the industry.